



# SILVER RUSH 50 RUN



JULY 10<sup>TH</sup>, 2021  
ATHLETE GUIDE



# WELCOME TO THE 2021 SILVER RUSH WEEKEND!



We are elated to have everyone back home this summer! Thank you for joining us in Leadville, CO for this spectacular event! You've put in all the hard work and we can't wait to cheer you on and watch you tackle the 2021 Leadville Trail Marathon and Heavy Half. This day is so much more than just a race. It's an opportunity to discover all that you're capable of. It's a place to call home and feel connected with those who share the same passion. It's a starting line that welcomes each and every journey with open arms. And above all, being here shows the grit and perseverance you had through an exhausting and disorderly 2020 to make it to where you are today. Congratulations - your race day has arrived!

Our goal for the Leadville Race Series remains the same as it has been since runners first lined up at 6th & Harrison on that early morning in 1983: to make a difference in the local community and across the world through the thousands of athletes that travel to Leadville each year. Since 2009, we have given out \$340,000 in college scholarships to Lake County graduating seniors choosing to pursue higher education. In 2020, our athletes showed true Leadville Spirit and raised over \$140,000 in donated entries for the Lake County School District. None of this could have been possible without the most important part of the "Race Across the Sky" - YOU! The contributions you have made have helped hundreds of young people through important times in their lives.

We would like to extend a huge thank you to the Lake County Sheriff's Department, Colorado Mountain College, Cloud City Conservation Center, Lake County Search & Rescue, the Leadville Police Department, St. Vincent Hospital, the Cloud City Ski Club, our valued event sponsors and the hundreds of volunteers who are joining us this weekend. Without the support of these individuals, this event would not be possible!

As you prepare for race day, remember what got you here. Reflect on all the obstacles life threw your way, and know you overcame every single one of them. Remember all the hundreds of training hours, blood, sweat and tears you put into this journey. As you make your way to the finish line, never forget that "you're better than you think you are, and can do more than you think you can."

Sincerely,

Ken Chlouber

Merilee Maupin

Tim Brosious

Michelle Duffy

Quinn Cooper

Rich Naprstek

Carli Powers

Cole Chlouber

Ryan Cross

Amanda Boyer

Leadville Race Series

# SCHEDULE OF EVENTS



## FRIDAY, JULY 9

### 3:00pm - 8:00pm Packet Pickup

Location: Base of Dutch Henri Hill - US Highway 24 and McWethy Dr. ([Directions from Retail to Dutch Henri](#))

No onsite registration.

ID is required.

Packets must be picked up in person - they will not be mailed or given to others.

## SATURDAY, JULY 10

### 5:00am - 5:45am - Packet Pickup - 50 RUN ONLY

Location: Base of Dutch Henri Hill - US Highway 24 and McWethy Dr. ([Directions from Retail to Dutch Henri](#))

### 6:00am SILVER RUSH 50 RUN START

Location: Base of Dutch Henri Hill - US Highway 24 and McWethy Dr. ([Directions from Retail to Dutch Henri](#))

### 8:30am SILVER RUSH 15 RUN START

Location: Base of Dutch Henri Hill - US Highway 24 and McWethy Dr. ([Directions from Retail to Dutch Henri](#))

### 10:00am - 3:00pm - MTB (50 and 15) Packet Pick Up

Location: Base of Dutch Henri Hill - US Highway 24 and McWethy Dr. ([Directions from Retail to Dutch Henri](#))

### 11:00am - 11:45am - Kids Duathlon Registration and Packet Pickup

Location: CMC Campus Soccer Field ([Directions from Retail store](#))

### 12:00pm - KIDS DUATHLON START

Location: CMC Campus Soccer Field ([Directions from Retail store](#))

### 8:00pm - Lottery Coin Drawing

50 mile runners only

Location: Base of Dutch Henri Hill - US Highway 24 and McWethy Dr. ([Directions from Retail to Dutch Henri](#))

# SCHEDULE OF EVENTS



## SUNDAY, JULY 11

### 6:30am - 7:45am - Silver Rush MTB Packet Pickup

Location: Base of Dutch Henri Hill - US Highway 24 and McWethy Dr. ([Directions from Retail to Dutch Henri](#))

No onsite registration.

### 8:00am - SILVER RUSH 50 MTB START

8:00am - Wave 1 - self seeded

8:05am - Wave 2 - self seeded

#### Note:

Qualifier coin will ONLY be at the top of the hill for wave 1 - first male and first female only

There are no drop bags allowed for the Silver Rush 50 MTB

Location: Base of Dutch Henri Hill - US Highway 24 and McWethy Dr. ([Directions from Retail to Dutch Henri](#))

### 8:30am SILVER RUSH 15 MTB START

Location: Base of Dutch Henri Hill - US Highway 24 and McWethy Dr. ([Directions from Retail to Dutch Henri](#))

### 12:00pm - 5:00pm Finish Festival

Location: Base of Dutch Henri Hill - US Highway 24 and McWethy Dr. ([Directions from Retail to Dutch Henri](#))

### 4:30pm - Awards Ceremony and LT100 MTB Qualifier Selection

LT100 MTB Qualifying Spots will be awarded

Must be present to claim your LT100 MTB Qualifier Spot





# AWARDS

Awards/age group qualifier coins will be distributed as athletes finish the race. All finishers will receive a medal and pint glass. Results will be posted on website throughout the event.

## 8PM- COINS

LT100 Run qualifier coin drawing will take place. Relay teams are not eligible for the LT100 Run qualifier coin.

## AWARD CATEGORIES

### Silver Rush 50-Mile Run participant categories:

- Top 3 men overall
- Top 3 women overall
- Top 3 non-binary overall
- Top 3 age group (19-under, 20-29, 30-39, 40-49, 50-59, 60-69, 70+)

### Relay participant participant categories:

- Top 3 overall overall

### Silver Rush 15-Mile Run participant categories:

- Top 3 men overall
- Top 3 women overall
- Top 3 non-binary overall

Kids racing in the Kids Duathlon will receive finisher swag!

# COURSE DESCRIPTION



The 50-mile out-and-back course takes racers through the historic mining district on the east side of Leadville. Primarily on dirt roads, first set by miners and their burros, it will begin at the Cloud City Ski Hut (located just below Colorado Mountain College on Hwy 24 on the South end of Leadville). None of the roads used will be closed to vehicle traffic, so please use caution and follow the rules of the road. The route will take runners by and between many grand and historic gold and silver mines.

**Total course cut off is 14 hours, 8:00pm.** Racers that do not make the cut off at the aid stations will NOT be able to continue the race.

50 miles

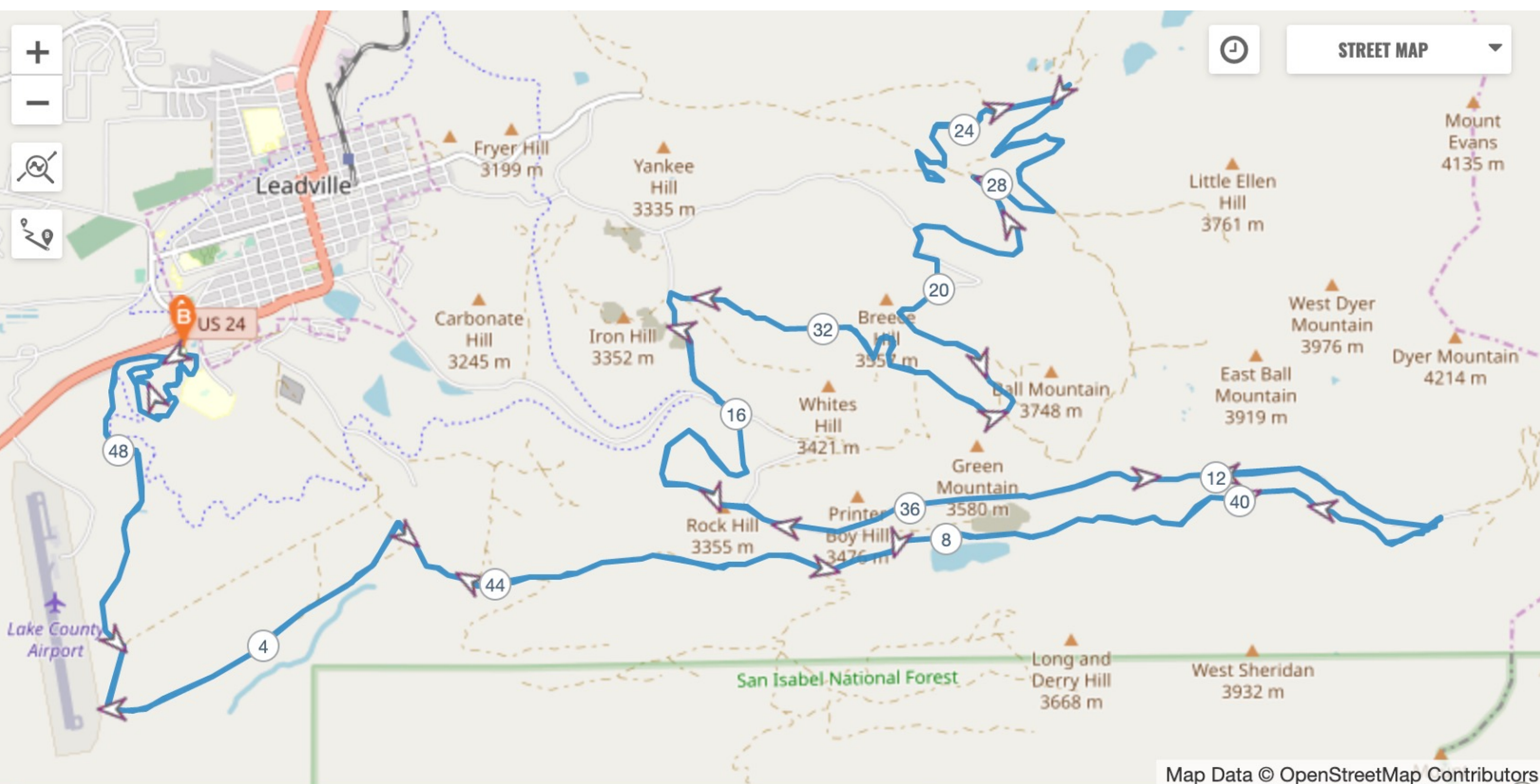
7,942' Elevation Gain

12,040' Highest point

[Interactive Map / GPX File](#)

## Returning in 2021!

- The first male and female racers to the top of Dutch Henri Hill will get the coveted LT100 Run qualifier coin. (Racers must finish the course in less than 14 hours to qualify.)
- The 2021 Silver Rush 50 Run will offer a relay option for runners. Two participants will tackle the 50 mile course through an exchange at the Stumptown Aid Station.



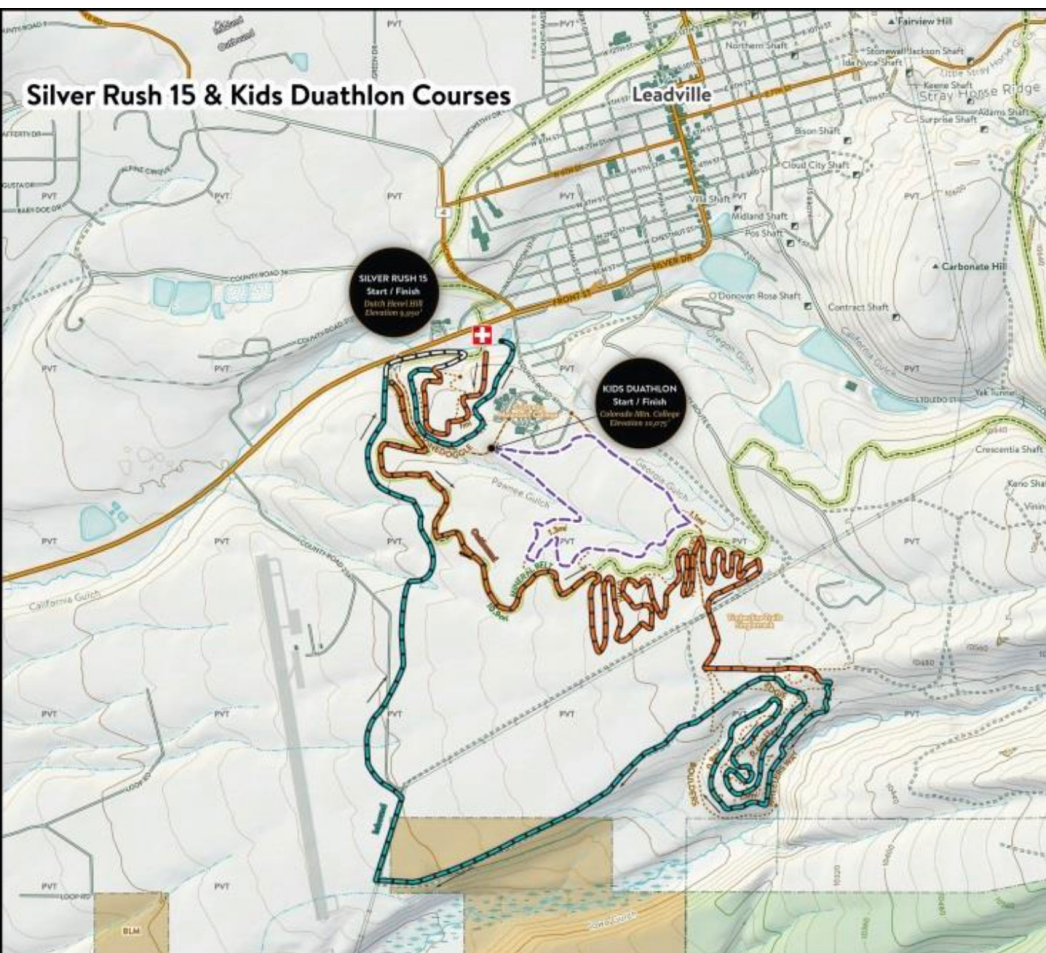
Map Data © OpenStreetMap Contributors



# SILVER RUSH 15 AND KIDS DUATHLON COURSE



Returning to 2021- the Silver Rush 50 weekend will be adding a 15 mile Run race. This race will start and finish on the same course as the Silver Rush 50 Run, but will feature mostly single track for the 15.5-miles. Course marking signage for 15 mile course will be black and yellow ribbons and yellow pin flags.

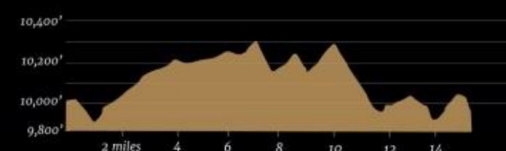


## Legend

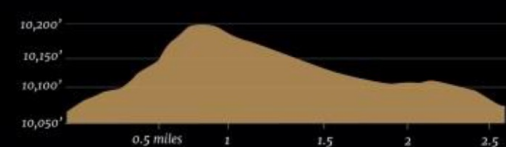
- SR15 Outbound
- SR15 Inbound
- Kids Duathlon



## Course Profile - Silver Rush 15 15.5 miles



## Course Profile - Kids Duathlon 2.6 miles



KARTA  
CUSTOM MAPS

Natural Atlas

1/2 mi  
1 km  
Contour Interval: 40 feet



WWW.KARTAMAPS.COM Copyright © 2018 Karta Maps © Natural Atlas, Inc. © OpenStreetMap contributors  
This map is not suitable for legal or surveying purposes, or for any other mapping need. Measurements, distance, or direction. Measurements should be taken from a map. Karta Custom Maps, its officers, or its map providers are responsible for any losses, damages, or decisions that might arise from use of this map.

# COURSE CUTOFFS + AID STATIONS



There will be seven well-supplied aid stations along course.

## Outbound

- Mile 7 - Black Cloud
- Mile 14 - Printer Boy Outbound
- Mile 18 - Venir
- Mile 24.4 - Stumptown (1:30pm cutoff)

## Inbound

- Mile 32 - Rock Garden (3:00pm cutoff)
- Mile 36 - Printer Boy (4:30pm cutoff)
- Mile 43 - Black Cloud (6:00pm cutoff)

**Aid stations will offer:** Water, GU Roctane, GU gels, Assorted foods including bananas, figs, pretzels, chips, etc.

## CUTOFF TIMES

Racers that do not make the cut off at the aid stations will NOT be able to continue the race

Cutoffs at aid stations are based on gun time - and have factored in various start times

Cutoffs at finish are based on chip time

- 1:30pm - Mile 24.4 - Stumptown
- 3:00pm - Mile 32 - Rock Garden
- 4:30pm - Mile 36 - Printer Boy
- 6:00pm - Mile 43 - Black Cloud
- 8:00pm - Total Course Cutoff (14hrs - chip time)

## DROP BAGS (50 Run only)

### Drop bags, clear plastic only

Drop bags will be taken to the Stumptown Aid Station (half way mark)

5:00am - 5:45am Saturday am at base of Dutch Henri Hill

4:00pm Bags will be returned to the start/finish

8:00pm - Drop bags must be claimed by 8:00 pm Saturday evening



# SPECTATOR LOCATIONS



To ensure the safety of Silver Rush racers, we will be discouraging public gatherings. If you choose to go out on course to spectate or crew, please stay within your close circle and socially distance yourself from others. Please be sure to clock your mileage with these directions.

## Directions to Silver Rush Aid Stations

All directions start from the Start/Finish Line.

### Printer Boy (39°13'37.74"N, 106°15'2.69"W)

- Take Hwy 24 north back toward Downtown Leadville.
- Pass the curve in the highway, right before hitting the historic Downtown district, make the first right hand turn onto Monroe Street.
- Head up to the top of the street and turn right onto Toledo which turns into County Road 2, otherwise known as California Gulch.
- Continue up California Gulch for 3.5 miles and you will see the aid station. BE CAUTIOUS as the California Gulch road does intersect with the race course approximately 2.5 miles from the Harrison Ave. turn off. RACERS HAVE THE RIGHT OF WAY!

### Stumptown (39°15'8.93"N, 106°13'59.82"W)

- Take Hwy 24 north back toward Downtown Leadville.
- Turn right at 7th Street, one block past the stoplight.
- Head up 7th Street which will bring you up through the Mining District.
- Veer right off onto County Road 38, 2.7 miles from the Harrison Ave. turn off. This is a VERY rough, dusty road. Please drive with caution.
- No parking allowed at the aid station, plan to park and walk into this location. Ambulance access must be maintained at all times, please park responsibly.

# SPECTATOR INFORMATION



## Race Protocols

To continue with the success Lake County and Leadville have had in suppressing the COVID-19 virus in the community we discourage spectating for 2021. This is required for our permits and for the success of the LRS in 2021.

Please respect all race protocols and signage; wear a mask where required, please keep your distance from others, continue to practice good hygiene by washing and sanitizing hands, etc. Spectating at the Start Line is highly discouraged.

Please allow athletes, volunteers, and staff the space to get the race kicked off safely!

Spectating at **ALL** aid stations is discouraged.

Aid Stations are set up to encourage one-way flow and physical distancing. Please ensure to give volunteers and athletes their space.

Finish Line spectating is discouraged. Please help continue to keep Lake County and Leadville safe from CV19 by discouraging unnecessary gathering.

Finish Line etiquette

Please adhere to all signage on where not to stand.

Please be prompt and swift on your presence in the area.

Please only plan to be there when your athlete is anticipated on coming into the finish chute.

Track your athletes split times by using the results page of our website

In and out as soon as your athlete has recovered enough to get to your vehicle or home.



# IMPORTANT INFO AND RULES



1. You **MUST HAVE** your ID to pick up your packet. You **CANNOT** pick up a packet for your friends.
2. Timing chips are located on the back of your race bib. Please do not fold or bend your bib in any way or your time will not be recorded.
3. You **MUST HAVE** your bib visible and on your body throughout the race.
4. To qualify and be eligible for entry into the LT100 Run, racers must complete the Silver Rush 50 Run in **LESS THAN 14 HOURS**.
5. **No Pacers Allowed.**
6. The LT100 Run drawing will start at approximately 8:00 pm
7. Awards are three-deep per category/division. They will be handed to racers as they cross the finish. Only top 3 will be awarded at the 15 mile run, no age group awards.
8. Unsportsmanlike conduct is grounds for disqualification.
9. Abandonment - No garbage, clothing, etc., shall be thrown on the course or surrounding area. Any athlete who violates this policy will be disqualified.
10. DNFs must be reported to timing, preferably at the start/finish line or nearest aid station.
11. **No pets on course, at aid stations, or at the start/finish area.**
12. Please pick up your trash and help the Zero Waste crews!
13. Trekking poles are allowed! Please be courteous of others

## **RACE NUMBERS**

Race numbers **MUST** be worn on the front of your body to ensure accurate timing.

## **TRASH & RECYCLING**

There will be recycling/compost containers at all full aid stations and at the start/finish line. Please discard of any waste in the appropriate container at an aid station.

Our local zero waste non-profit, Cloud City Conservation Center, is hosting our recycling program.

**Intentional littering on the course will be grounds for disqualification.** The course-on trails both public and private-travels past many historic sites and through areas of exceptional beauty. Help us keep them pristine!

# RETAIL STORE



316 Harrison Ave. Leadville, CO 80461

We are so excited to welcome you to our retail shop and the Leadville Race Series Racer Headquarters here in Leadville! Welcome our new Leadville Race Series store manager, Annie!

You'll find us closer to the pulse of the avenue with a fresh look, and amazing race gear for the whole family that you can only find here at 10,152 feet above sea level. We look forward to seeing you soon! Shop online as well here: <https://www.leadvilleraceseriesstore.com/>

Store Hours: 10 am - 6 pm daily. Open for the longevity of race day, too!





# VOLUNTEERS



THANK YOU TO OUR VOLUNTEERS!

Please take time along the way to thank the numerous volunteers. We couldn't put this race on without them!

To volunteer for any of our events, please visit the following website:

<https://www.givepulse.com/group/events/6795>



# PARKING AND CAMPING



## Camping

Colorado Mountain College is available! Spots are limited. Let's camp:  
<https://www.runningguru.com/E1.asp?eID=86558>

## Parking

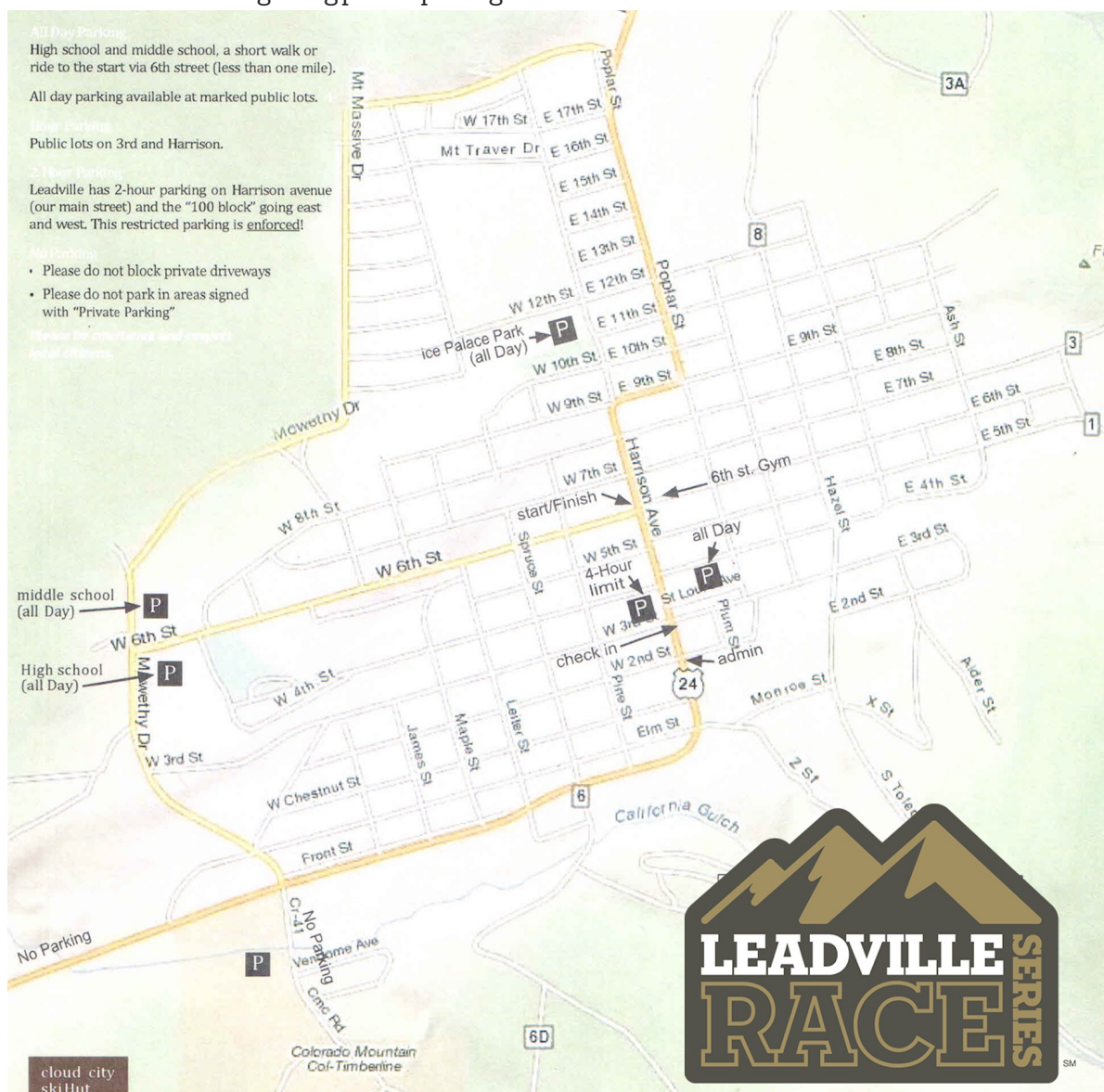
Parking is NOT ALLOWED at adjacent businesses OR on either side of Highway 24 or Lake County 41. If you park along these roads, you will be ticketed and towed. There are parking attendants on staff for the Silver Rush 50 and there is no charge to park.

Colorado Mountain College- 901 US HWY 21

-Respect the volunteer parking staff and the abundant signage posted.

The Lake County High School and Middle School parking lots- 1000 W. 4<sup>th</sup> St. and 1000 W. 6<sup>th</sup> St

- Please be courteous regarding private parking in the residential areas around Leadville.





# LT100 QUALIFIER INFORMATION



The 2021 Silver Rush 50 Run will award 25-100 qualifying slots to the Leadville Trail 100 Run presented by La Sportiva. Half of the qualifying spots will be allocated based on the top age-group performances and half will be drawn among runners who have finished the qualifier race within the allocated cut-off time of 14 hours.

1. The 2021 Silver Rush 50 Run will award 25-100 qualifying slots to the Leadville Trail 100 Run.

2. 50% of slots will be distributed based on performance in the qualifying event.

Slots will be distributed to each gender and age group (20-29, 30-39, etc.) based on the percentage of total athletes in those age groups, with a minimum of one slot for every age group.

The top athletes in each age group will receive the allocated slots.

In the event a top athlete elects not to accept a slot, the slot will roll down to the next athlete in the results, within the age group.

If slots are not claimed after the roll down in each age group, those slots will be allocated to the drawing, as described below.

3. 50% of slots will be distributed through the Silver Rush 50 Run drawing.

All finishers under the pre-determined maximum finish time will hand in their bib number tab to athlete services when announced.

Names will be drawn from the eligible athletes and slots will be given out.

In the event an athlete opts not to accept a slot, the slots will roll down to the next athlete that is drawn, until ALL slots have been distributed.

4. Qualification slots must be claimed in person immediately.

5. Registration for the Leadville Trail 100 Run must be completed and paid for within the designated timeframe.

6. For the 2021 Qualifiers, runners may elect to race in the Leadville Trail 100 for 2021 or defer until 2022. Through the registration process, runners will be asked to select the year they prefer to race as a potential qualifier.

7. All registration fees for the LT100 are non-transferrable and non-refundable.

# LEAVE NO TRACE



## PLAN AHEAD AND PREPARE

- Know the regulations and special concerns for the area you'll visit.
- Prepare for extreme weather, hazards and emergencies.

## TRAVEL AND CAMP ON DURABLE SURFACES

- Durable surfaces include established trails and campsites, rock, gravel or dry grasses.
- Good campsites are found, not made. Altering a site is not necessary.

## DISPOSE OF WASTE PROPERLY

- Pack it in, pack it out.
- Deposit solid human waste in catholes dug six-to-eight inches deep at least 200 feet from water, camp and trails. Cover and disguise the cathole when finished.

## LEAVE WHAT YOU FIND

- Preserve the past: examine, but do not touch, cultural or historic structures and artifacts.
- Leave rocks, plants and other natural objects as you find them.

## MINIMIZE CAMPFIRE IMPACTS

- Campfires can cause lasting impacts to the backcountry. Use a lightweight stove for cooking and enjoy a candle lantern for light.
- Where fires are permitted, use established fire rings, fire pans or mound fires.

## RESPECT WILDLIFE

- Observe wildlife from a distance. Do not follow or approach them.
- Never feed animals. Feeding wildlife damages their health, alters natural behaviors and exposes them to predators and other dangers.

## BE CONSIDERATE OF OTHER VISITORS

- Respect other visitors and protect the quality of their experience.
- Be courteous. Yield to other users on the trail.



# DIRECTIONS TO LEADVILLE



## METRO DENVER & DENVER INTERNATIONAL AIRPORT (121 MILES)

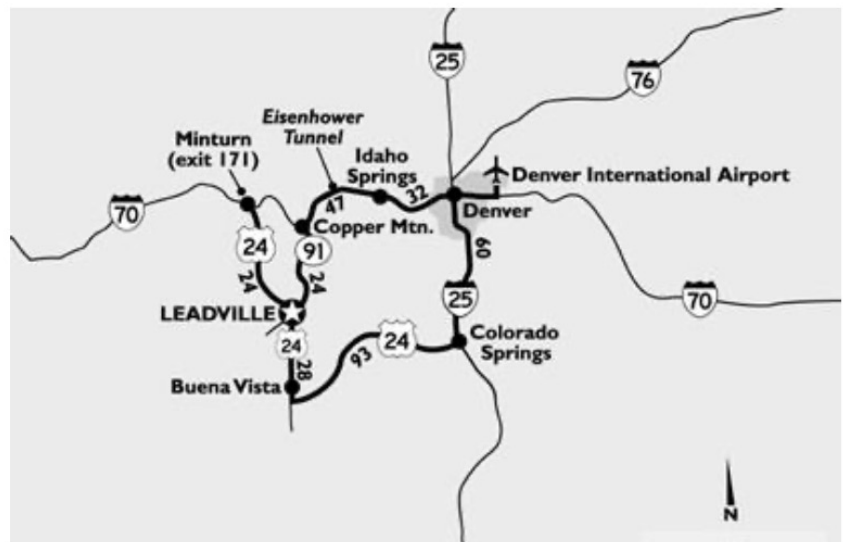
- Take I-70 West
- Go through the Eisenhower Tunnel
- Continue past Dillon
- Continue past Frisco
- Take Hwy 91, Copper Mtn Resort (Exit 195)
- Go South on Hwy 91, past Climax to Leadville (24 miles)

## GRAND JUNCTION (163 MILES)

- Take I-70 East
- Turn onto Hwy 24 South at Minturn
- Follow Hwy 24 over Tennessee Pass to Leadville

## PUEBLO (153 MILES)

- Take Hwy 50 West through Canon City and Salida
- Take Hwy 291 North until Hwy 285
- Take Hwy 285 North until Hwy 24
- Take Hwy 24 North until Leadville



## COLORADO SPRINGS (130 MILES)

- Take Hwy 24 West through Woodland Park
- Continue past Buena Vista
- Continue onto Hwy 24 to Leadville

The town of Leadville is located 10,152' above sea level in Colorado's Rocky Mountains. From every direction, it's a breathtaking and easy drive.

# LEADVILLE RACE SERIES EVENT SCHEDULE

Visit [www.leadvilleraceseries.com](http://www.leadvilleraceseries.com) for more information.



EVENT	DATE	LOCATION
Leadville Trail Marathon and Heavy Half	Saturday, June 19, 2021	Leadville, CO
Leadville Trail 100 RUN Camp	June 25-27, 2021	Leadville, CO
Stages Cycling Leadville Trail 100 MTB Camp	July 1-4, 2021	Leadville, CO
Stages Cycling Lutsen 99er	Saturday, June 26, 2021	Lutsen, MN
Silver Rush 50 Run	Saturday, July 10, 2021	Leadville, CO
Stages Cycling Silver Rush 50 MTB	Sunday, July 11, 2021	Leadville, CO
Stages Cycling Leadville Stage Race	July 30- Aug 1, 2021	Leadville, CO
Tahoe Trail MTB	Saturday, July 17 <sup>th</sup> , 2021	NorthStar, CA
Stages Cycling Leadville Trail 100 MTB	Saturday, August 14, 2021	Leadville, CO
Leadville Trail 10K Run	Sunday, August 15, 2021	Leadville, CO
Leadville Trail 100 RUN presented by La Sportiva	Saturday, August 21-22, 2021	Leadville, CO
Barn Burner MTB	Saturday, September 18 <sup>th</sup> , 2021	Flagstaff, AZ
Barn Burner Run	Saturday, September 19 <sup>th</sup> , 2021	Flagstaff, AZ
Austin Rattler MTB & Run	November 6 <sup>th</sup> , 2021	Burnet, TX





## AT YOUR SERVICE... THE LEADVILLE RACE SERIES STAFF

**Quinn Cooper**  
Athlete Services

**Tim Brosious**  
Event Manager

**Michelle Duffy**  
Assoc. Marketing Director

**Richard Naprstek**  
Volunteer Coordinator

**Ryan Cross**  
Marketing Manager

**Carli Powers**  
SR. Nat'l Account Manager

**Cole Chlouber**  
Field Marketing Manager

**Amanda Boyer**  
Marketing Coordinator

Please email Quinn Cooper at [Leadville@ltevents.zendesk.com](mailto:Leadville@ltevents.zendesk.com), if you have questions or need to connect with our team.

You'll also be seeing the familiar faces of Leadville Trail 100 Founder Ken Chlouber and former LT100 Race Director Merilee Maupin at the events this year!

# RACE SPONSORS



We thank the following sponsors for making the Silver Rush 50 Run possible. Whether local or national, we ask our participants and fans to look to these sponsors first for the services or products they provide. We truly could not host these amazing events without all of you. Our most sincere thanks to you all!



## The Feed.



