



SILVER RUSH 50 MTB

JULY 11TH, 2021
ATHLETE GUIDE

WELCOME TO THE 2021 SILVER RUSH WEEKEND!



We are elated to have everyone back home this summer! Thank you for joining us in Leadville, CO for this spectacular event! You've put in all the hard work and we can't wait to cheer you on and watch you tackle the 2021 Leadville Trail Marathon and Heavy Half. This day is so much more than just a race. It's an opportunity to discover all that you're capable of. It's a place to call home and feel connected with those who share the same passion. It's a starting line that welcomes each and every journey with open arms. And above all, being here shows the grit and perseverance you had through an exhausting and disorderly 2020 to make it to where you are today. Congratulations - your race day has arrived!

Our goal for the Leadville Race Series remains the same as it has been since runners first lined up at 6th & Harrison on that early morning in 1983: to make a difference in the local community and across the world through the thousands of athletes that travel to Leadville each year. Since 2009, we have given out \$340,000 in college scholarships to Lake County graduating seniors choosing to pursue higher education. In 2020, our athletes showed true Leadville Spirit and raised over \$140,000 in donated entries for the Lake County School District. None of this could have been possible without the most important part of the "Race Across the Sky" - YOU! The contributions you have made have helped hundreds of young people through important times in their lives.

We would like to extend a huge thank you to the Lake County Sheriff's Department, Colorado Mountain College, Cloud City Conservation Center, Lake County Search & Rescue, the Leadville Police Department, St. Vincent Hospital, the Cloud City Ski Club, our valued event sponsors and the hundreds of volunteers who are joining us this weekend. Without the support of these individuals, this event would not be possible!

As you prepare for race day, remember what got you here. Reflect on all the obstacles life threw your way, and know you overcame every single one of them. Remember all the hundreds of training hours, blood, sweat and tears you put into this journey. As you make your way to the finish line, never forget that "you're better than you think you are, and can do more than you think you can."

Sincerely,

Ken Chlouber

Merilee Maupin

Tim Brosious

Michelle Duffy

Quinn Cooper

Rich Naprstek

Carli Powers

Cole Chlouber

Ryan Cross

Amanda Boyer

Leadville Race Series

SCHEDULE OF EVENTS



FRIDAY, JULY 9

3-8pm Packet Pickup

Location: Base of Dutch Henri Hill - US Highway 24 and McWethy Dr.

No onsite registration. ID is required. Packets must be picked up in person. They will not be mailed or given to others.

SATURDAY, JULY 10

Packet Pickup

Location: Base of Dutch Henri Hill - US Highway 24 and McWethy Dr.

10am-3pm- Silver Rush MTB packet pickup. No onsite registration.

11:00 am - 11:45 am - Kids Duathlon registration and packet pickup on CMC Campus Soccer Field

RACE START!

Location: Base of Dutch Henri Hill- US Highway 24 and McWethy Dr

50-mile riders will leave in waves of people every three minutes. Face coverings will be required for the entire time that you are on the start line. **NO EXCEPTIONS.**

Silver Rush 50 MTB

Wave 1 - 8:00am

Wave 2 - 8:05am

Wave 3 - 8:10am

8:30am Silver Rush 15 Run

12:00pm Kid's Duathlon

There are no drop bags allowed for the Silver Rush 50 MTB.

SCHEDULE OF EVENTS



Location: Base of Dutch Henri Hill- US Highway 24 and McWethy Dr

Awards/age group qualifier coins will be distributed as athletes finish the race. All finishers will receive a medal and a pair of socks. Results will be posted online concluding the event. All finishers receive a medal and Silver Rush 50 MTB stainless steel pint glass.

Silver King & Silver Queen awards will be awarded to athletes that conquered BOTH the Silver Rush 50 Run and Silver Rush 50 MTB as they cross the finish line!

Award Categories

Silver Rush 50-Mile Run participant awards will be in the following category:

- Top 3 men
- Top 3 women
- Top 3 non-binary

Tandem participant awards will be in the following category:

- Top 3 overall
- Tandem teams are not eligible for the LT100 Run qualifier coin.

Silver Rush 15-Mile Run awards will be in the following category:

- Top 3 men
- Top 3 women
- Top 3 non-binary

COURSE DESCRIPTION



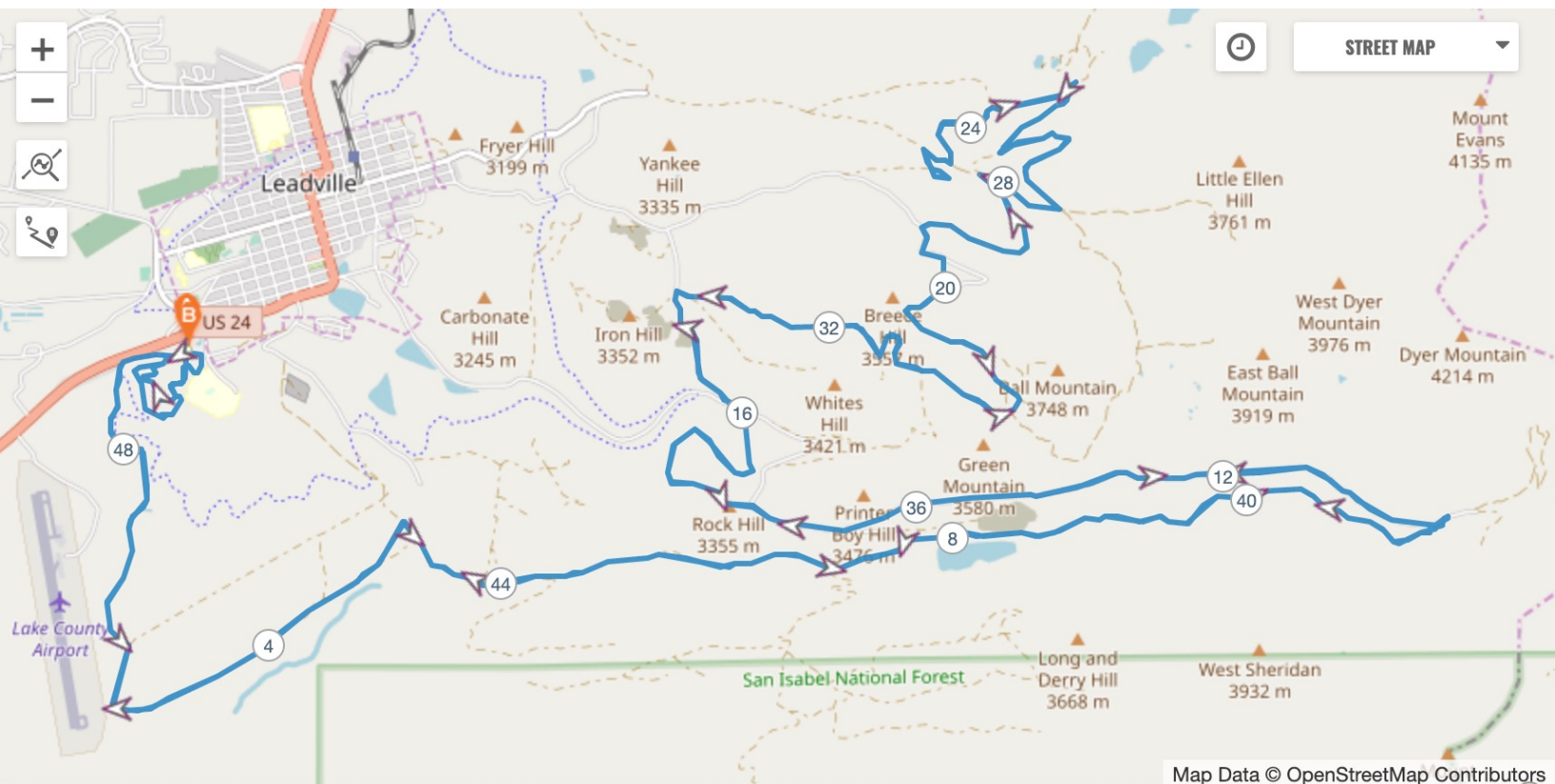
Get friendly with the 2021 course you'll be riding! [View an interactive map here.](#)

50 miles that will put your skills and endurance to the test. Technical climbs and descents are met with the glorious mountain views of Leadville. 7,900 feet of elevation gain over these 50 miles presents an excellent test for the Stages Cycling Leadville Trail 100 MTB in August.

The so-mile course takes racers through the historic mining district on the east side of Leadville, past many gold and silver mines. It will begin at the Cloud City Ski Hut (located just below Colorado Mountain College on Hwy 24 on the south end of Leadville). None of the roads will be closed to vehicle traffic, so please use caution. The courses will be well marked with fluorescent **pink-and-black-striped ribbon, signage and arrows.**

Returning in 2021!

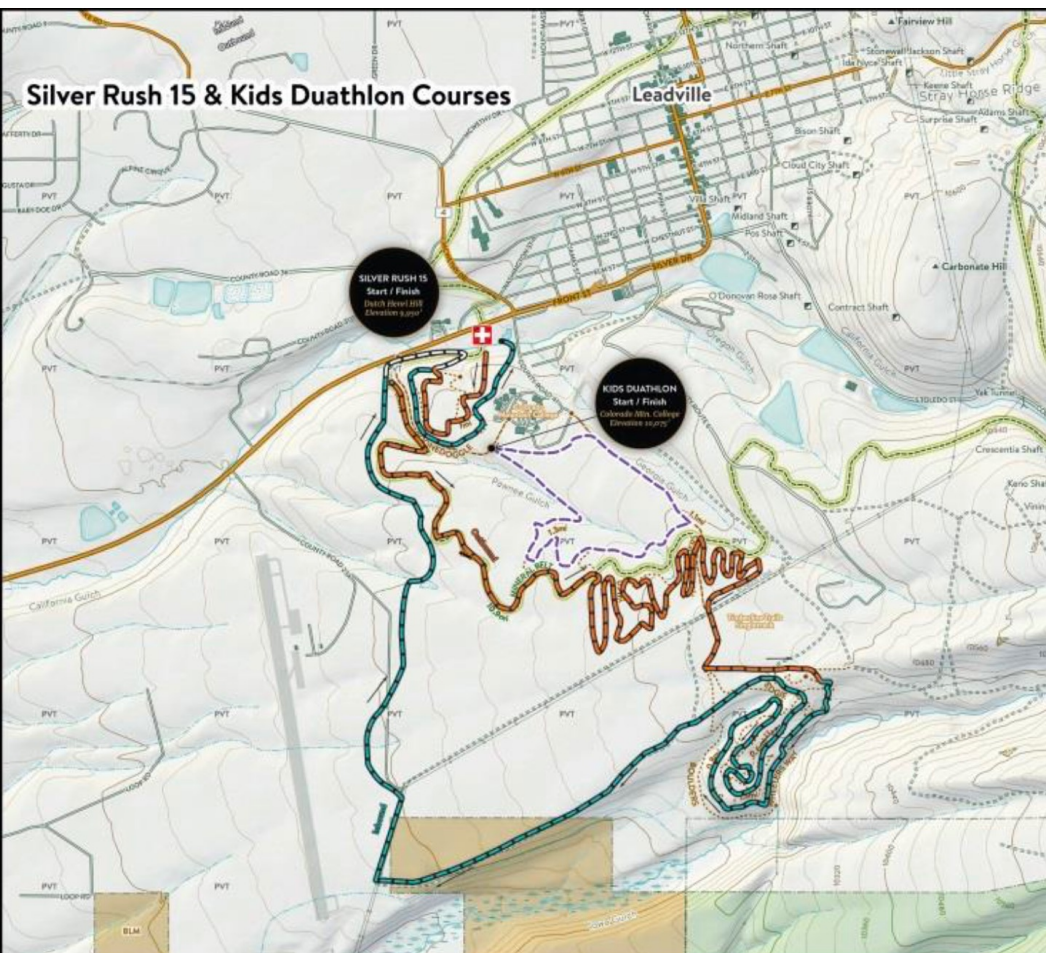
- The first male and female racers to the top of Dutch Henri Hill (with their bike) will get the coveted LT100 MTB qualifier coin. (Racers must finish the course in less than 14 hours to qualify.)
- The 2021 Silver Rush 50 MTB will offer a relay option for bikers. Two participants will tackle the 50 mile course through an exchange at the Stumptown Aid Station.



SILVER RUSH 15 AND KIDS DUATHLON COURSE



Returning in 2021- The Silver Rush 50 weekend will be adding a 15 mile MTB race. This race will start and finish on the same course as the Silver Rush 50 MTB, but will feature mostly single track for the 15 miles. Course marking signage for 15.5 Mile course will be black and yellow ribbons and yellow pin flags.

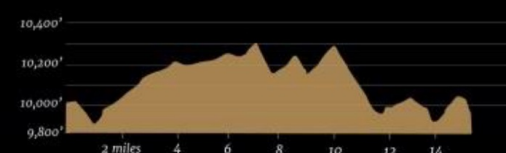


Legend

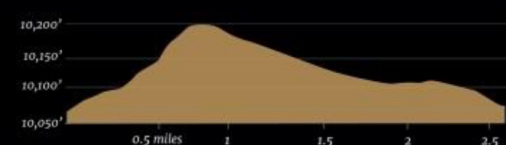
- SR15 Outbound
- SR15 Inbound
- Kids Duathlon



Course Profile - Silver Rush 15 15.5 miles



Course Profile - Kids Duathlon 2.6 miles



1/2 mi
1 km
Contour Interval: 40 feet



WWW.KARTAMAPS.COM Copyright © 2018 Karta Maps © Natural Atlas, Inc. © OpenStreetMap contributors
This map is not suitable for legal or surveying purposes, or if any user relying on it, measurement, distance, or direction, or elevation data.
Karta Custom Maps, its officers, or its map providers are responsible or liable for any losses, damages, or decisions that might arise from use of this map.

COURSE CUTOFFS + AID STATIONS



Course Cutoffs

There is an 8 hour and 15 minute time limit and an aid station cut-off at

- 12:50pm- Stumptown (24.4 miles)
- 2:20 pm- Printer Boy Inbound (35.3 miles)
- 4:20 pm- Finish Line (50 miles)

Aid Stations

There will be seven well-supplied aid stations along course.

Outbound

Printer Boy Outbound - Mile 14

Rock Garden - Mile 18

Stumptown - Mile 24.4

Rock Garden Inbound- Mile 32

Printer Boy Inbound - Mile 36

Aid stations will offer:

Water

GU Roctane, GU gels

Assorted foods including bananas, figs, pretzels, chips, M&M's, PB&Js, etc.

SPECTATOR LOCATIONS



To ensure the safety of Silver Rush racers, we allow crew to drive up to the Printer Boy and Stumptown Aid Stations. Please be sure to clock your mileage with these directions.

Directions to Silver Rush Aid Stations

All directions start from the Start/Finish Line.

Printer Boy (39°13'37.74"N, 106°15'2.69"W)

- Take Hwy 24 north back toward Downtown Leadville.
- Pass the curve in the highway, right before hitting the historic Downtown district, make the first right hand turn onto Monroe Street.
- Head up to the top of the street and turn right onto Toledo which turns into County Road 2, otherwise known as California Gulch.
- Continue up California Gulch for 3.5 miles and you will see the aid station. **BE CAUTIOUS** as the California Gulch road does intersect with the race course approximately 2.5 miles from the Harrison Ave. turn off. **RACERS HAVE THE RIGHT OF WAY!**

Stumptown (39°15'8.93"N, 106°13'59.82"W)

- Take Hwy 24 north back toward Downtown Leadville.
- Turn right at 7th Street, one block past the stoplight.
- Head up 7th Street which will bring you up through the Mining District.
- Veer right off onto County Road 38, 2.7 miles from the Harrison Ave. turn off. This is a **VERY** rough, dusty road. Please drive with caution.
- No parking allowed at the aid station, plan to park and walk into this location. Ambulance access must be maintained at all times, please park responsibly.

SPECTATOR INFORMATION



Spectator Management and discouragement will be critical for Leadville Race Series in 2021. This is a requirement by the Lake County Office of Emergency Management and Public Health. This must be a multi-pronged approach:

- social media
- athlete guides
- website
- pre-event athlete briefing videos

Race Protocols

To continue with the success Lake County and Leadville have had in suppressing the COVID-19 virus in the community we discourage spectating for 2021. This is required for our permits and for the success of the LRS in 2021.

Please respect all race protocols and signage; wear a mask where required, please keep your distance from others, continue to practice good hygiene by washing and sanitizing hands, etc.

Spectating at the Start Line is highly discouraged.

Please allow athletes, volunteers, and staff the space to get the race kicked off safely!

Spectating at **ALL** aid stations is prohibited.

Aid Stations are set up to encourage one-way flow and physical distancing. Please ensure to give volunteers and athletes their space.

Finish Line spectating is discouraged. Please help continue to keep Lake County and Leadville safe from CV19 by discouraging unnecessary gathering.

Finish Line etiquette

Masks required!

Please adhere to all signage on where not to stand.

Please be prompt and swift on your presence in the area.

Please only plan to be there when your athlete is anticipated on coming into the finish chute.

Track your athlete with the many Apps available on your phone.

In and out as soon as your athlete has recovered enough to get to your vehicle or home.

IMPORTANT INFO AND RULES:



1. You **MUST HAVE** your photo ID to pick up your packet. You **CANNOT** pick up a packet for your friends. This applies to tandem and relay team riders as well.
2. You **MUST HAVE** your number plate on your bike throughout the race. Race numbers **MUST** be worn on the front of your body to ensure accurate timing.
3. To qualify and be eligible for the lottery, racers must complete the Silver Rush 50 in **LESS THAN 8 HOURS**.
4. Folding your number plate will damage the timing chip.
5. Awards start at approximately 4:30 pm.
6. Awards are three-deep per category/division. Only top 3 will be awarded at the 15 mile mtb, no age group awards.
7. Unsportsmanlike conduct is grounds for disqualification.
8. Abandonment. no garbage, clothing, etc., shall be thrown on the course or surrounding areas. Any rider who violates this policy will be disqualified.
9. DNFs must be reported to the timer, at the start/finish line.
10. **No pets on course, including at aid stations or at start/finish area.**
11. Please pick up your trash!

TRASH AND RECYCLING:

There will be recycling/compost containers at all full aid stations and at the start/finish line, please place any waste in the proper bin. This is a zero waste event.

Our local zero waste non-profit, Cloud City Conservation Center, is hosting our recycling program.

Intentional littering on the course will be grounds for disqualification. The course—on trails both public and private—travels past many historic sites and through areas of exceptional beauty. Help us keep them pristine!

2021 Leadville Trail 100 MTB Qualifier Finish Times & Coinciding Corral Placements

| Event | Gold | Silver | Red | Green | Purple | Orange | Blue | White |
|-------------------------------------|-------------|-------------|-------------|-------------|-------------|-------------|-------------|----------|
| 2020 Austin Rattler 100k | Sub 5:00 | Sub 5:15 | Sub 5:30 | Sub 6:00 | Sub 6:30 | Sub 7:00 | Sub 8:00 | 8:00+ |
| *2019 Austin Rattler 100K | Sub 3:10:08 | Sub 3:18:30 | Sub 3:39:01 | Sub 3:48:54 | Sub 4:11:14 | Sub 5:21:10 | Sub 5:46:46 | 5:46:46+ |
| 2019/2021 Wilmington Whiteface 100k | Sub 4:10 | Sub 4:20 | Sub 4:30 | Sub 4:50 | Sub 5:10 | Sub 5:40 | Sub 7:00 | 7:00+ |
| 2019/2021 Lutsen 99er | Sub 5:45 | Sub 6:10 | Sub 6:25 | Sub 6:45 | Sub 7:15 | Sub 7:45 | Sub 8:30 | 8:30+ |
| 2021 Silver Rush 50 MTB | Sub 4:00 | Sub 4:15 | Sub 4:30 | Sub 5:00 | Sub 5:30 | Sub 6:00 | Sub 7:15 | 7:15+ |
| *2019 Silver Rush 50 MTB | Sub 3:59:02 | Sub 4:12:32 | Sub 4:45:02 | Sub 5:12:12 | Sub 5:55:54 | Sub 6:45:07 | Sub 7:30+ | 7:30+ |
| 2019/2021 Tahoe Trail 100k | Sub 4:15 | Sub 4:45 | Sub 5:15 | Sub 6:00 | Sub 6:45 | Sub 7:30 | Sub 8:00 | 8:00+ |
| 2019/2021 Leadville Stage Race | Sub 7:00 | Sub 7:30 | Sub 8:00 | Sub 8:30 | Sub 9:30 | Sub 10:00 | Sub 10:45 | 10:45+ |
| 2018/2019 Barn Burner 104 mile | Sub 6:30 | Sub 7:00 | Sub 7:30 | Sub 8:00 | Sub 8:30 | Sub 9:00 | Sub 9:30 | 9:30+ |
| 2018/2019 LT100 MTB | Sub 7:45 | Sub 8:15 | Sub 8:30 | Sub 9:00 | Sub 10:00 | Sub 11:00 | Sub 12:00 | 12:00+ |

Some of you are racing in the Silver Rush 50 and already have entry into the 2020 LT100 MTB race. If you wish for us to consider your finish time at the Silver Rush for corraling in Leadville, please email Quinn at Leadville@ltevents.Zendesk.com by July 20th. Include your name, finish time at the Silver Rush and a nice note!

LT100 QUALIFIER INFORMATION



The 2021 Silver Rush 50 MTB will award 25-100 qualifying slots to the Stages Cycling Leadville Trail 100 MTB. Half of the qualifying spots will be allocated based on the top age-group performances and half will be drawn among runners who have finished the qualifier race within the allocated cut-off time of 8 hours.

1. The 2021 Silver Rush 50 MTB will award 25-100 qualifying slots to the Leadville Trail 100 MTB.

2. 50% of slots will be distributed based on performance in the qualifying event.

Slots will be distributed to each gender and age group (20-29, 30-39, etc.) based on the percentage of total athletes in those age groups, with a minimum of one slot for every age group.

The top athletes in each age group will receive the allocated slots.

In the event a top athlete elects not to accept a slot, the slot will roll down to the next athlete in the results, within the age group.

If slots are not claimed after the roll down in each age group, those slots will be allocated to the drawing, as described below.

One slot will be allocated for the top single speed rider.

Slots will be allocated to the top tandem team.

3. 50% of slots will be distributed through the Silver Rush 50 Run drawing.

All finishers under the pre-determined maximum finish time will hand in their bib number tab to athlete services when announced.

Names will be drawn from the eligible athletes and slots will be given out.

In the event an athlete opts not to accept a slot, the slots will roll down to the next athlete that is drawn, until ALL slots have been distributed.

4. Qualification slots must be claimed in person immediately.

5. Registration for the Leadville Trail 100 MTB must be completed and paid for within the designated timeframe.

6. For the 2021 Qualifiers, runners may elect to race in the Leadville Trail 100 for 2021 or defer until 2022. Through the registration process, runners will be asked to select the year they prefer to race as a potential qualifier.

7. All registration fees for the LT100 are non-transferrable and non-refundable.

RETAIL STORE

316 Harrison Ave. Leadville, CO 80461



We are so excited to welcome you to our retail shop and the Leadville Race Series Racer Headquarters here in Leadville! Welcome our new Leadville Race Series store manager, Annie!

You'll find us closer to the pulse of the avenue with a fresh look, and amazing race gear for the whole family that you can only find here at 10,152 feet above sea level. We look forward to seeing you soon! Shop online as well here:
<https://www.leadvillraceseriesstore.com/>

Store Hours: 10 am - 6 pm daily. Open for the longevity of race day, too!



VOLUNTEERS



THANK YOU TO OUR VOLUNTEERS!

Please take time along the way to thank the numerous volunteers. We couldn't put this race on without them!

To volunteer for any of our events, please visit the following website:
<https://www.givepulse.com/group/events/6795>



PARKING AND CAMPING



CAMPING

Check our website for more information regarding camping at the CMC location and reservations closer to race weekend!

PARKING

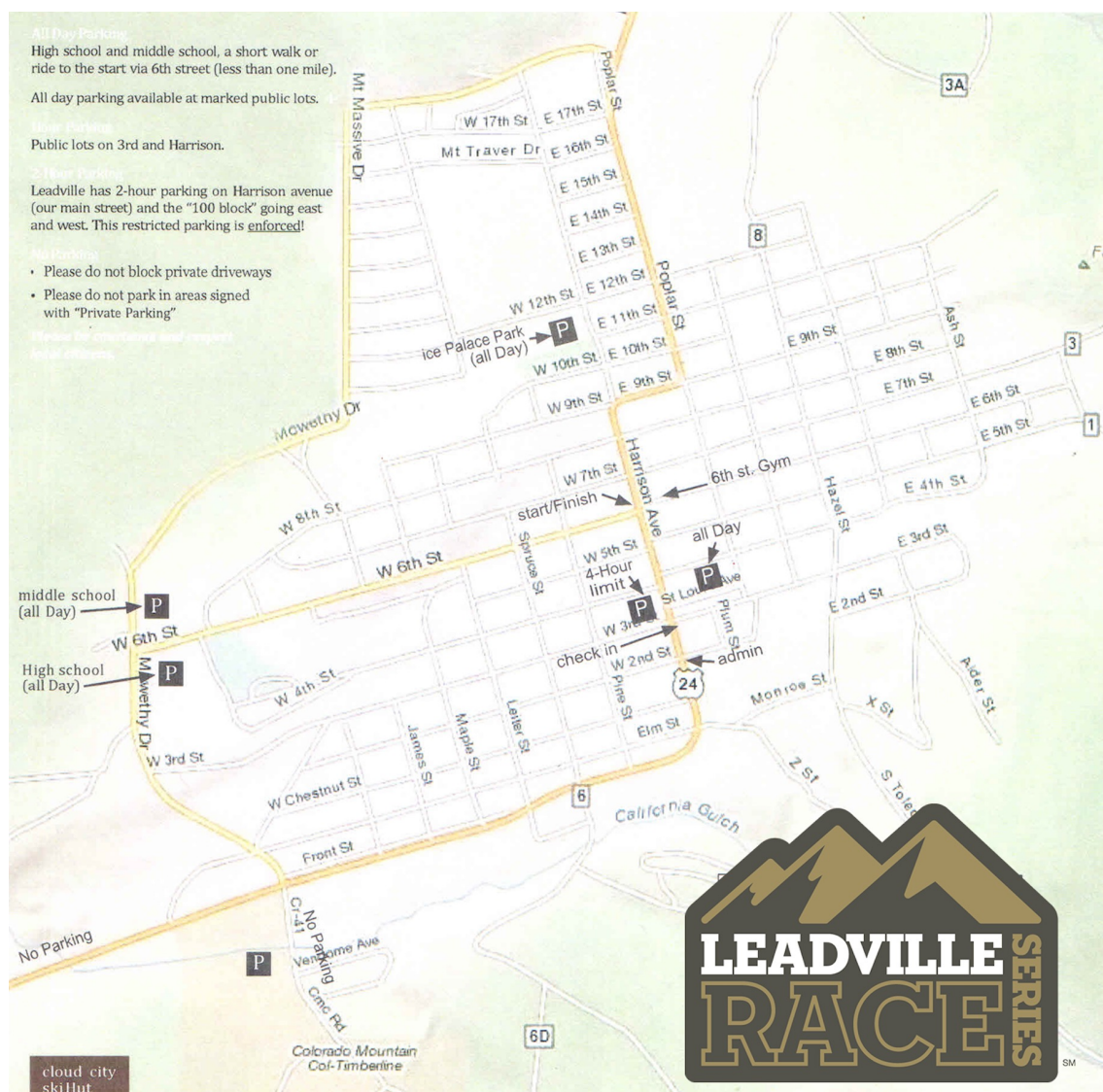
Parking is NOT ALLOWED on either side of Highway 24 or Lake County 41. If you park along these roads, you will be ticketed and towed. There are parking attendants on staff for the Silver Rush 50 and there is no charge to park.

Colorado Mountain College- 901 US HWY 21

-Respect the volunteer parking staff and the abundant signage posted.

The Lake County High School and Middle School parking lots- 1000 W. 4th St. and 1000 W. 6th St

- Please be courteous regarding private parking in the residential areas around Leadville.



LEAVE NO TRACE



PLAN AHEAD AND PREPARE

- Know the regulations and special concerns for the area you'll visit.
- Prepare for extreme weather, hazards and emergencies.

TRAVEL AND CAMP ON DURABLE SURFACES

- Durable surfaces include established trails and campsites, rock, gravel or dry grasses.
- Good campsites are found, not made. Altering a site is not necessary.

DISPOSE OF WASTE PROPERLY

- Pack it in, pack it out.
- Deposit solid human waste in catholes dug six-to-eight inches deep at least 200 feet from water, camp and trails. Cover and disguise the cathole when finished.

LEAVE WHAT YOU FIND

- Preserve the past: examine, but do not touch, cultural or historic structures and artifacts.
- Leave rocks, plants and other natural objects as you find them.

MINIMIZE CAMPFIRE IMPACTS

- Campfires can cause lasting impacts to the backcountry. Use a lightweight stove for cooking and enjoy a candle lantern for light.
- Where fires are permitted, use established fire rings, fire pans or mound fires.

RESPECT WILDLIFE

- Observe wildlife from a distance. Do not follow or approach them.
- Never feed animals. Feeding wildlife damages their health, alters natural behaviors and exposes them to predators and other dangers.

BE CONSIDERATE OF OTHER VISITORS

- Respect other visitors and protect the quality of their experience.
- Be courteous. Yield to other users on the trail.

DIRECTIONS TO LEADVILLE



METRO DENVER & DENVER INTERNATIONAL AIRPORT (121 MILES)

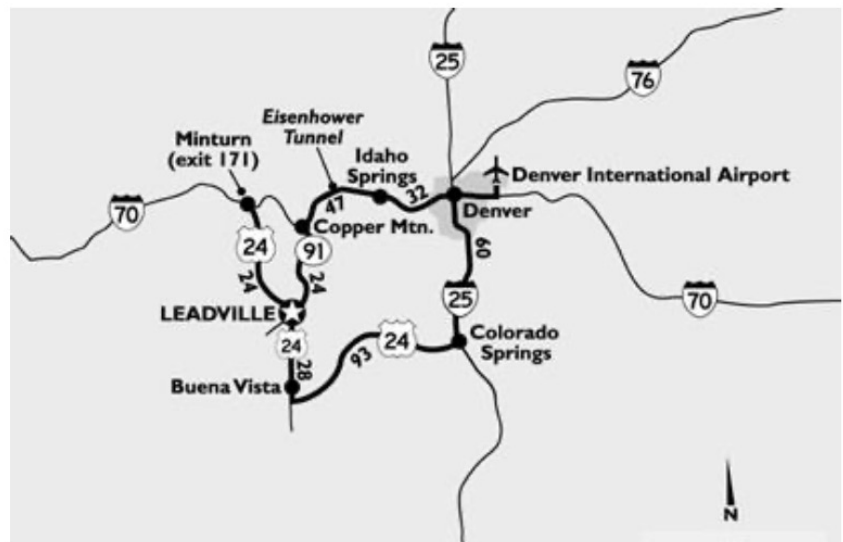
- Take I-70 West
- Go through the Eisenhower Tunnel
- Continue past Dillon
- Continue past Frisco
- Take Hwy 91, Copper Mtn Resort (Exit 195)
- Go South on Hwy 91, past Climax to Leadville (24 miles)

GRAND JUNCTION (163 MILES)

- Take I-70 East
- Turn onto Hwy 24 South at Minturn
- Follow Hwy 24 over Tennessee Pass to Leadville

PUEBLO (153 MILES)

- Take Hwy 50 West through Canon City and Salida
- Take Hwy 291 North until Hwy 285
- Take Hwy 285 North until Hwy 24
- Take Hwy 24 North until Leadville



COLORADO SPRINGS (130 MILES)

- Take Hwy 24 West through Woodland Park
- Continue past Buena Vista
- Continue onto Hwy 24 to Leadville

The town of Leadville is located 10,152' above sea level in Colorado's Rocky Mountains. From every direction, it's a breathtaking and easy drive.

LEADVILLE RACE SERIES EVENT SCHEDULE

Visit www.leadvilleraceseries.com for more information.



| EVENT | DATE | LOCATION |
|--|---|---------------|
| Leadville Trail Marathon and Heavy Half | Saturday, June 19, 2021 | Leadville, CO |
| Leadville Trail 100 RUN Camp | June 25-27, 2021 | Leadville, CO |
| Stages Cycling Leadville Trail 100 MTB Camp | July 1-4, 2021 | Leadville, CO |
| Stages Cycling Lutsen 99er | Saturday, June 26, 2021 | Lutsen, MN |
| Silver Rush 50 Run | Saturday, July 10, 2021 | Leadville, CO |
| Stages Cycling Silver Rush 50 MTB | Sunday, July 11, 2021 | Leadville, CO |
| Stages Cycling Leadville Stage Race | July 30- Aug 1, 2021 | Leadville, CO |
| Tahoe Trail MTB | Saturday, July 17 th , 2021 | NorthStar, CA |
| Stages Cycling Leadville Trail 100 MTB | Saturday, August 14, 2021 | Leadville, CO |
| Leadville Trail 10K Run | Sunday, August 15, 2021 | Leadville, CO |
| Leadville Trail 100 RUN presented by La Sportiva | Saturday, August 21-22, 2021 | Leadville, CO |
| Barn Burner MTB | Saturday, September 18 th , 2021 | Flagstaff, AZ |
| Barn Burner Run | Saturday, September 19 th , 2021 | Flagstaff, AZ |
| Austin Rattler MTB & Run | November 6 th , 2021 | Burnet, TX |



AT YOUR SERVICE... THE LEADVILLE RACE SERIES STAFF

Quinn Cooper
Athlete Services

Tim Brosious
Event Manager

Michelle Duffy
Assoc. Marketing Director

Richard Naprstek
Volunteer Coordinator

Ryan Cross
Marketing Manager

Carli Powers
SR. Nat'l Account Manager

Cole Chlouber
Field Marketing Manager

Amanda Boyer
Marketing Coordinator

Please email Quinn Cooper at Leadville@ltevents.zendesk.com, if you have questions or need to connect with our team.

You'll also be seeing the familiar faces of Leadville Trail 100 Founder Ken Chlouber and former LT100 Race Director Merilee Maupin at the events this year!

RACE SPONSORS



We thank the following sponsors for making the Stages Cycling Silver Rush 50 MTB possible. Whether local or national, we ask our participants and fans to look to these sponsors first for the services or products they provide. We truly could not host these amazing events without all of you. Our most sincere thanks to you all!



ORANGE MUD



SPECIALIZED

CRAFT



overachieving H₂O

The Feed.



