

SILVER RUSH 50MTB

.....
2014 ATHLETE GUIDE





leadvillraceeseries.com

LIFETIME

THE HEALTHY WAY OF LIFE COMPANY™

Welcome Silver Rush 50 Mountain Bike Athletes!

The Leadville Race Series proudly presents the 2014 Silver Rush 50 Mountain Bike race! Not only is it a thrilling race in of itself, but also it's your chance to qualify for the legendary Leadville Trail 100!

This exciting event is hosted in the historic Leadville mining district located on the east side of Leadville. The area is known for its beautiful scenery, mining heritage and challenging trails. The 50-mile course is an out-and-back mix of dirt roads and double track Jeep trails. Complete it in less than eight hours and you will be closer to a possible start in the Leadville Trail 100 MTB race on August 9.

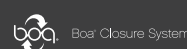
There will be many on-course aid stations set up for racers that will provide water, energy drinks, an assortment of fuel foods and volunteer assistance. Spectators and racers can visit the vendor expo and bring their appetites and lawn chairs for a stop at the beer garden, where we will be serving up some great food and brews. All those involved in the Leadville Race Series and especially the Leadville/Lake County community have done a lot of work to offer this course and a wonderful racing experience. Please be courteous and help keep the "east side" of town clean.

Thank you for racing with us and we hope to see you again at one of the many Leadville Race Series events around the country. Please visit leadvillraceeseries.com for a complete listing of all our events.

Best Regards,

Josh Colley
Abby Long
Paul Anderson
Craig Martin
Heidi Colley
Kerri Bruxvoort

Leadville Race Series





leadvillraceeseries.com

LIFETIME

THE HEALTHY WAY OF LIFE COMPANY™

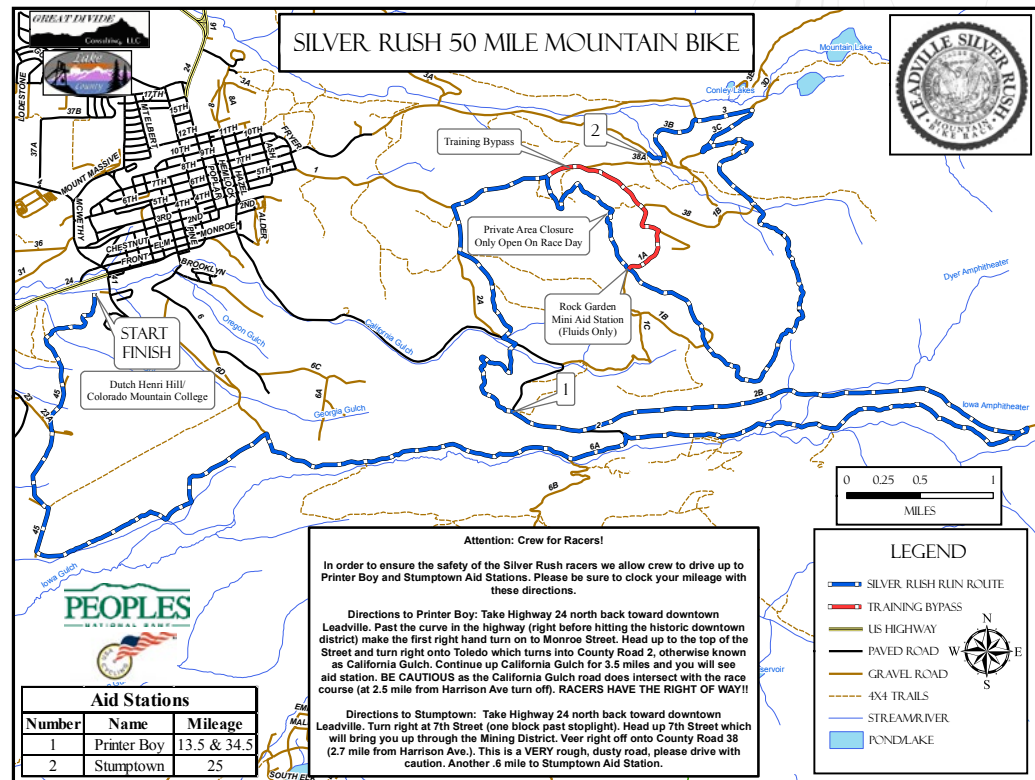
SILVER RUSH 50 MTB COURSE DESCRIPTION

Need a nice, easy challenge? Then forget this one. 'Cause it's nasty! Cut the Leadville Trail 100 in half, remove all the easy parts and throw in technical descents, burning lungs and wild animals. Now you have a better understanding of what you're about to get into.

The 50-mile, out-and-back course takes racers through the historic mining district on the east side of Leadville, past many gold and silver mines. It will begin at the Cloud City Ski Hut (located just below Colorado Mountain College on Hwy 24 on the south end of Leadville). None of the roads will be closed to vehicle traffic, so please use caution. The courses will be well marked with fluorescent pink-and-black-striped ribbon, signage and chalk arrows.

Back for 2014! The first male and female racers to the top of Dutch Henri Hill (with their bike) will get the coveted LT100 MTB qualifier coin. (Racers must finish the course in less than eight hours to qualify.)

COURSE MAP



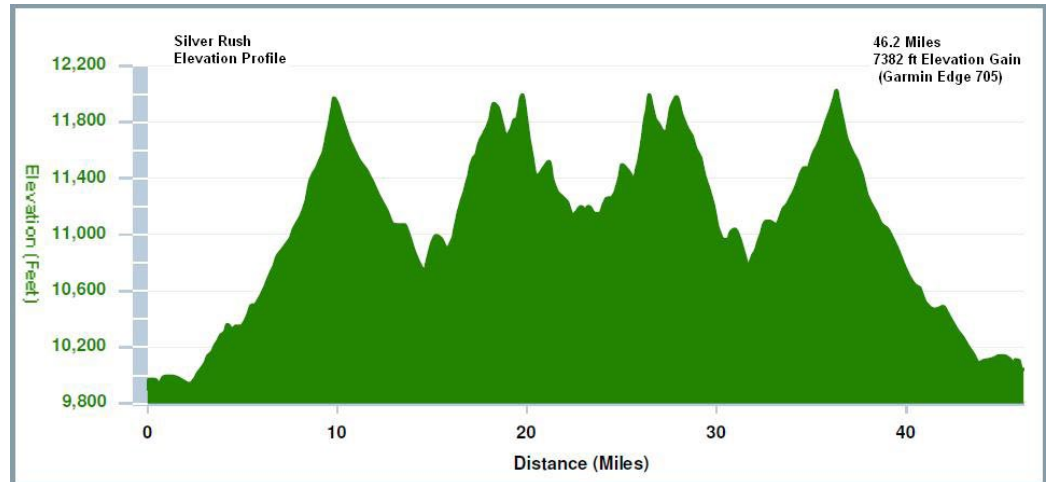


leadvillerraceseries.com

LIFETIME

THE HEALTHY WAY OF LIFE COMPANY™

SILVER RUSH 50 MTB COURSE ELEVATION PROFILE





leadvillerraceseries.com

LIFETIME

THE HEALTHY WAY OF LIFE COMPANY™

SCHEDULE OF EVENTS

FRIDAY, JULY 11

In-person Registration and Packet Pickup @ Race HQ, 316 Harrison Ave

11:00am - 7:00pm

Photo ID is required. Packets must be picked up in person. They will not be mailed or given to others.

Expo

11:00am - 7:00pm

Herbalife Basecamp, 112 E 3rd Street (just up the ramp from packet pickup!)

SATURDAY, JULY 12

Packet Pickup (no race day registration) at Base of Dutch Henri Hill (start/finish)

7:00am - 8:15am SHARP! (This will ensure that all timing files are completed and submitted prior to race start. Please plan accordingly.)

Photo ID is required. Packets must be picked up in person. They will not be mailed or given to others.

Race Start: 9:00am

Base of Dutch Henri Hill (just below Colorado Mountain College on Hwy 24 South)

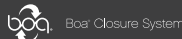
1:00pm - 5:00pm Post-Race Meal served by our local High Altitude Cooking!

5:30pm Awards Ceremony held at the base of Dutch Henri Hill

SUNDAY, JULY 13

Silver Rush 50 Run

Race Start: 6:00am





leadvillerraceseries.com

LIFETIME

THE HEALTHY WAY OF LIFE COMPANY™

COURSE CUT-OFFS

Four-and-a-half-hour cut-off at the halfway point

Eight-hour time limit to complete the race

Our desire is to see everyone finish, and we will support you the best we can. However, if we do need to remove someone for missing the cut-off, the decision of the race official is final. Lake County Search and Rescue will be conducting sweep and providing on-course medical support.

AID STATIONS

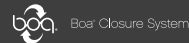
There will be three well-supplied aid stations offering:

GU product

Herbalife product

Water

Assorted foods including bananas, oranges, watermelon, figs, pretzels, PB&Js, etc.





leadvillraceeseries.com

LIFETIME

THE HEALTHY WAY OF LIFE COMPANY™

DIRECTIONS TO LEADVILLE FROM:

Metro Denver & Denver Intl Airport (121 miles)

- Take I-70 West
- Go through the Eisenhower Tunnel
- Continue past Dillon
- Continue past Frisco
- Take Hwy 91, Copper Mtn Resort (Exit 195)
- Go South on Hwy 91, past Climax to Leadville (24 m)

Grand Junction (163 Miles)

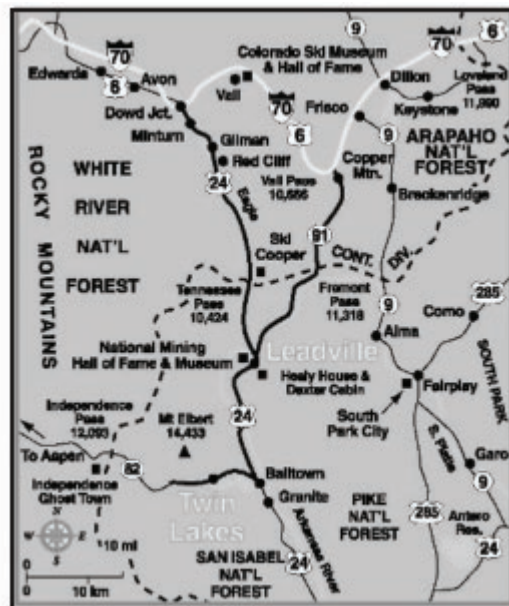
- Take I-70 East
- Turn onto Hwy 24 South at Minturn
- Follow Hwy 24 over Tennessee Pass to Leadville

Pueblo (153 miles)

- Take Hwy 50 West through Canon City and Salida
- Take Hwy 291 North until Hwy 285
- Take Hwy 285 North until Hwy 24
- Take Hwy 24 North until Leadville.

Colorado Springs (130 miles)

- Take Hwy 24 West through Woodland Park
- Continue past Buena Vista
- Continue on Hwy 24 to Leadville



The town of Leadville is located at 10,200' above sea level in Colorado's Rocky Mountains. From every direction, it's a breathtaking and easy drive...and if you happen to get lost, just head uphill!





leadvillraceeseries.com

LIFETIME

THE HEALTHY WAY OF LIFE COMPANY™

RETAIL SHOP

We are so excited to welcome you to our retail shop and the Leadville Race series Racer Headquarters at 316 Harrison Avenue here in Leadville! You'll find us closer to the pulse of the avenue with a fresh look, and amazing race gear for the whole family that you can only find here at 10,152 feet above sea level. We look forward to seeing you soon!

Race Management Headquarters remains at 213 Harrison Avenue.

EXPO

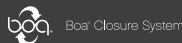
Be sure to walk through the vendor expo! Friday, July 11th you'll find our vendor booths at the Herbalife Basecamp, 112 E 3rd Street (just up the ramp from packet pickup!). And on race day you can find our vendor village at the base of Dutch Henri Hill. The Leadville Race Series will staff our retail store, located at 316 Harrison Avenue, throughout the event.

RACE NUMBERS

Race numbers must be visible at all times, tied to the handle bars of your bike. Please do not cut or fold your number. The timing chip is affixed to the number. If you cut or fold your race number you may damage the chip, which means your race times will not be recorded.

AWARDS

All finishers receive a finisher's medal and Leadville Silver Rush 50 MTB pint glass at the finish line. The awards ceremony will take place at the finish line area after the eight-hour cut-off, approximately 5:30pm. Awards will be three deep in each division. Age groups are male/female in ten-year increments (14-19, 20-29, 30-39, etc.)





leadvillerraceseries.com

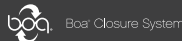
LIFETIME

THE HEALTHY WAY OF LIFE COMPANY™

QUALIFIER EXPLANATION

Each Leadville Qualifying Series race provides 25-150 qualifying slots to the Leadville Trail 100 MTB, based on the total number of registered riders at each qualifier event. Half of the qualifying spots will be allocated based on the top age-group performances and half will be drawn among riders who have finished the qualifier race within the allocated cut-off time.

1. Qualification events will be allocated 25-150 slots, based on the number of registered riders.
2. 50% of slots will be distributed based on performance in the qualifying event.
 - a. Slots will be distributed to each gender and age group (20-29, 30-39, etc.) based on the percentage of total athletes in those age groups, with a minimum of one slot for every age group.
 - b. The top athletes in each age group will receive the allocated slots.
 - c. In the event a top athlete elects not to accept a slot, the slot will roll down to the next athlete in the results, within the age group.
 - d. In the event slots are not claimed after the roll down in each age group, those slots will be allocated to the Event Lottery, as described below.
 - e. One slot will be allocated for the top single speed rider.
 - f. Slots will be allocated to the top tandem team.
3. 50% of slots will be distributed through the Event Lottery.
 - a. All finishers under the pre-determined maximum finish time, who have indicated their desire to participate in the lottery, will be entered in the lottery.
 - b. Names will be drawn from the eligible lottery athletes and slots will be given out.
 - c. In the event an athlete opts not to accept a slot, the slots will roll down to the next athlete that is drawn, until ALL slots have been distributed.
4. Qualification slots must be claimed in person immediately.
5. Registration for the Leadville Trail 100 must be completed and paid for immediately.
6. For the 2014 Qualifiers, riders may elect to race in the Leadville Trail 100 for 2014 or defer until 2015. Registration will happen onsite for either year and payment will be assessed for 2014 or 2015. Through the registration process, riders will be asked to select the year they prefer to race.
7. Only solo riders will be considered as potential qualifiers. Relays are welcome to race qualifier events where available but will not be considered as a potential qualifier.
8. All registration fees for the LT100 are non-transferrable and non-refundable.





leadvillerraceseries.com

LIFETIME

THE HEALTHY WAY OF LIFE COMPANY™

LT100 MTB CORRAL/START POSITION

As one of the most well known mountain bike races on earth, getting into the Leadville Trail 100 has always been difficult. A qualifier event could not only gain you entry into the LT100 MTB, but it could also boost your corral starting position in the Race Across the Sky!

Rider starting positions will be organized in color-coded corrals. These positions will be based on a finish time from the 2013 (year prior only) LT100 MTB race, a 2013 or 2014 qualifier event finish time, or if you hold a current USCI Pro Elite XC license. Please enter finish times or license numbers when prompted during the registration process. Corrals will be assigned as follows:

2014 Leadville Trail 100 MTB Qualifier Finish Times & Coinciding Corral Placements

	Gold	Silver	Red	Green	Purple	Orange	Blue	White
2013/14 Austin Rattler 100K	Sub 4:00 hrs	Sub 4:15 hrs	Sub 4:40 hrs	Sub 5:10 hrs	Sub 5:40 hrs	Sub 6:15 hrs	Sub 7:00 hrs	New Racers/
2013/14 Wilmington Whiteface 100K	Sub 4:30 hrs	Sub 4:50 hrs	Sub 5:15 hrs	Sub 5:45 hrs	Sub 6:15 hrs	Sub 7:00 hrs	Sub 8:00 hrs	Those who do not have a current qualifier time or year prior LT100 finish time.
2013/14 Fire Road 100K	Sub 4:00 hrs	Sub 4:45 hrs	Sub 5:45 hrs	Sub 6:45 hrs	Sub 7:15 hrs	Sub 7:45 hrs	Sub 8:00 hrs	
2013/14 Silver Rush 50 Mile	Sub 4:00 hrs	Sub 4:30 hrs	Sub 5:30 hrs	Sub 6:30 hrs	Sub 7:15 hrs	Sub 7:45 hrs	Sub 8:00 hrs	
2013/14 Tahoe Trail 100K	Sub 4:15 hrs	Sub 5:00 hrs	Sub 6:00 hrs	Sub 7:00 hrs	Sub 7:15 hrs	Sub 7:45 hrs	Sub 8:00 hrs	
2013/14 Barn Burner 104 Mile	Sub 7:20 hrs	Sub 7:50 hrs	Sub 8:20 hrs	Sub 9:00 hrs	Sub 9:30 hrs	Sub 10:30 hrs	Sub 11:00 hrs	
2013 LT 100 MTB	Sub 8:00 hrs	Sub 8:30 hrs	Sub 9:00 hrs	Sub 10:00 hrs	Sub 11:00 hrs	Sub 12:00 hrs	VIP/Charity	

Some of you are racing in the Silver Rush 50 and already have entry into the 2014 LT100 MTB race. If you wish for us to consider your finish time at the Silver Rush for corralling in Leadville, please email Abby at along@lifetimefitness.com by July 25th. Include your name, finish time at the Silver Rush and a nice note!



leadvillraceseries.com

LIFETIME

THE HEALTHY WAY OF LIFE COMPANY™

IMPORTANT INFO AND RULES

You **MUST HAVE** your photo ID to pick up your packet. You **CANNOT** pick up a packet for your friends.

You **MUST HAVE** your number plate on your bike through the race.

The race starts at 9am at the base of Dutch Henri Hill.

To qualify and be eligible for the lottery, racers must complete the Silver Rush 50 in **LESS THAN 8 HOURS**.

Awards start at approximately 5:30pm.

Awards are three-deep per category/division.

Unsportsmanlike conduct is grounds for disqualification.

Abandonment: no garbage, clothing, etc., shall be thrown on the course or surrounding areas.

DNFs must be reported to the timer, at the start/finish line

No pets on course or at start/finish area.

Please pick up your trash!

No earphones.

TRASH AND RECYCLING

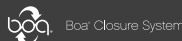
There will be trash bins and recycling/compost containers at all full aid stations and at the start/finish line. Please discard of any trash in the appropriate container or within 100 yards of an aid station. We will be recycling all plastic and aluminum during each of our events. Our local zero waste non-profit, Cloud City Conservation, is hosting our recycling program.

Intentional littering on the course will be grounds for disqualification. The course—on trails both public and private—travels past many historic sites and through areas of exceptional beauty. Help us keep them pristine!

THANK YOU TO OUR VOLUNTEERS!

Please take time along the way to thank the numerous volunteers. We couldn't put this race on without them!

To volunteer for any of our events, please visit the volunteer page on our website: leadvillraceseries.com





leadvilleraceseries.com

LIFETIME

THE HEALTHY WAY OF LIFE COMPANY™

LEAVE NO TRACE PRINCIPALS

PLAN AHEAD AND PREPARE

Know the regulations and special concerns for the area you'll visit.

Prepare for extreme weather, hazards and emergencies.

TRAVEL AND CAMP ON DURABLE SURFACES

Durable surfaces include established trails and campsites, rock, gravel or dry grasses.

Good campsites are found, not made. Altering a site is not necessary.

DISPOSE OF WASTE PROPERLY

Pack it in, pack it out.

Deposit solid human waste in catholes dug six-to-eight inches deep at least 200 feet from water, camp and trails. Cover and disguise the cathole when finished.

LEAVE WHAT YOU FIND

Preserve the past: examine, but do not touch, cultural or historic structures and artifacts.

Leave rocks, plants and other natural objects as you find them.

MINIMIZE CAMPFIRE IMPACTS

Campfires can cause lasting impacts to the backcountry. Use a lightweight stove for cooking and enjoy a candle lantern for light.

Where fires are permitted, use established fire rings, fire pans or mound fires.

RESPECT WILDLIFE

Observe wildlife from a distance. Do not follow or approach them.

Never feed animals. Feeding wildlife damages their health, alters natural behaviors and exposes them to predators and other dangers.

BE CONSIDERATE OF OTHER VISITORS

Respect other visitors and protect the quality of their experience.

Be courteous. Yield to other users on the trail.



leadvillerraceseries.com

LIFETIME

THE HEALTHY WAY OF LIFE COMPANY™

AT YOUR SERVICE... THE LEADVILLE RACE SERIES STAFF

JOSH COLLEY

Race Director
jcolley@lifetimefitness.com

ABBY LONG

Athlete Service & Registration Manager
along@lifetimefitness.com
719.219.9351

PAUL ANDERSON

Production & Logistics Manager
panderson4@lifetimefitness.com

CRAIG MARTIN

Retail Manager
cmartin2@lifetimefitness.com

KERRI BRUXVOORT

Marketing & Sponsorship Coordinator
kbruxvoort@lifetimefitness.com

HEIDI COLLEY

Volunteer Coordinator
leadville@lifetimefitness.com

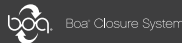
DAVE WIENS

Technical Director Leadville Race Series
daveonpine@yahoo.com

REBECCA RUSCH

Leadville Race Series
rebecca@rebeccarusch.com

You'll also be seeing the familiar faces of Leadville Trail 100 Founder Ken Chlouber and former LT100 Race Director Merilee Maupin at the events this year!





leadvillraceseries.com

LIFETIME

THE HEALTHY WAY OF LIFE COMPANY™

2014 LEADVILLE RACE SERIES EVENT SCHEDULE

VISIT www.leadvillraceseries.com FOR MORE INFORMATION

Austin Rattler March 29 & 30

Leadville Trail Marathon & Heavy Half June 14

Wilmington Whiteface June 22

Leadville Run Training Camp June 27-30

Leadville MTB Camp of Champions July 2-5 or July 6-9

Silver Rush 50 MTB July 12

Silver Rush 50 Run July 13

Tahoe Trail July 19

Leadville Trail 100 MTB August 9

Leadville 10K Run August 10

Leadville Trail 100 Run August 16

Barn Burner September 6

THANK YOU TO CYCLES OF LIFE, OUR OFFICIAL
LEADVILLE BIKE SHOP!

