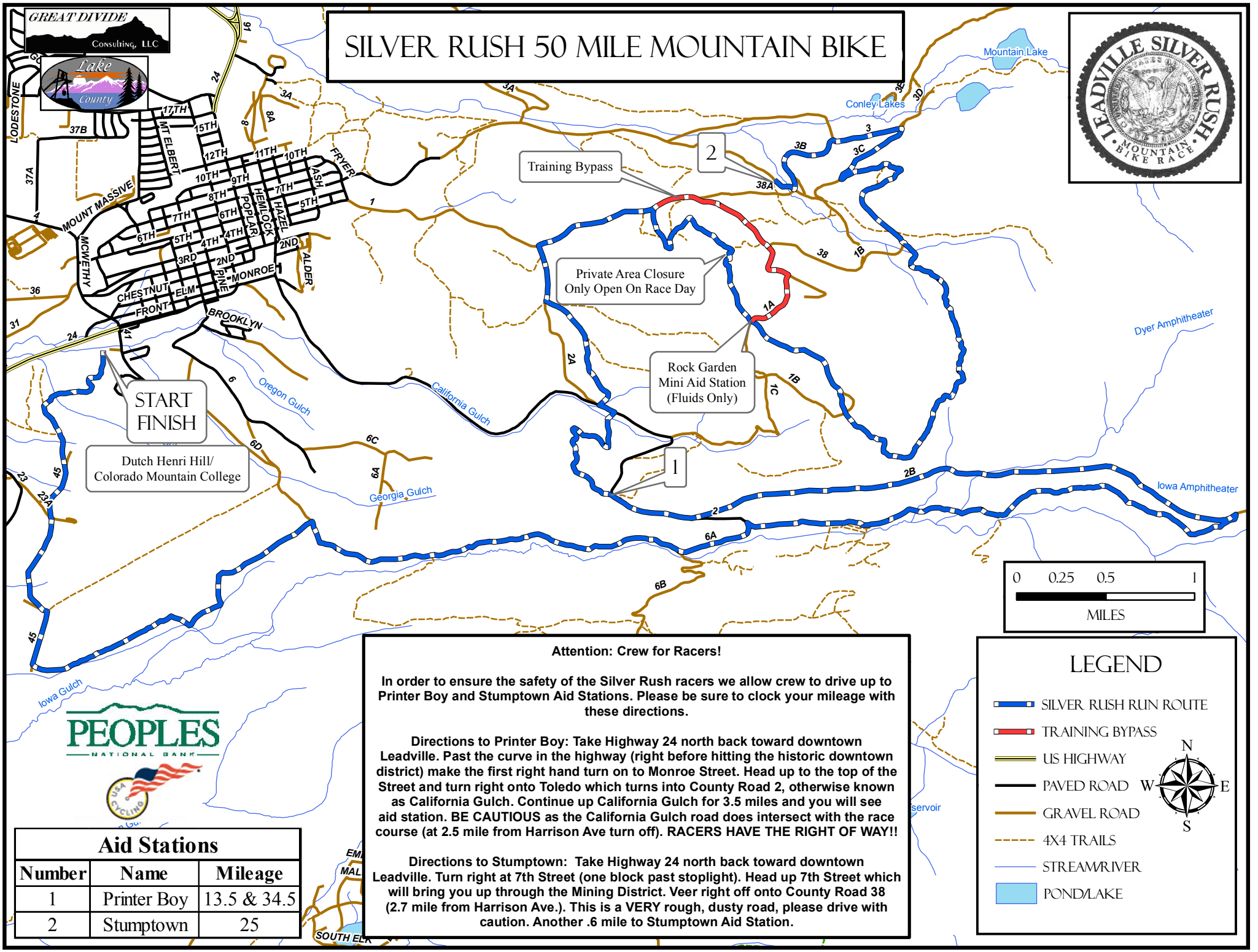


GREAT DIVIDE
Consulting, LLC



SILVER RUSH 50 MILE MOUNTAIN BIKE



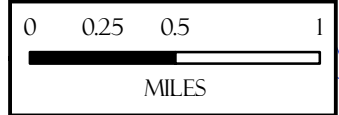
START
FINISH

Dutch Henri Hill/
Colorado Mountain College

Training Bypass

Private Area Closure
Only Open On Race Day

Rock Garden
Mini Aid Station
(Fluids Only)



Attention: Crew for Racers!

In order to ensure the safety of the Silver Rush racers we allow crew to drive up to Printer Boy and Stumptown Aid Stations. Please be sure to clock your mileage with these directions.

Directions to Printer Boy: Take Highway 24 north back toward downtown Leadville. Past the curve in the highway (right before hitting the historic downtown district) make the first right hand turn on to Monroe Street. Head up to the top of the Street and turn right onto Toledo which turns into County Road 2, otherwise known as California Gulch. Continue up California Gulch for 3.5 miles and you will see aid station. **BE CAUTIOUS** as the California Gulch road does intersect with the race course (at 2.5 mile from Harrison Ave turn off). **RACERS HAVE THE RIGHT OF WAY!!**

Directions to Stumptown: Take Highway 24 north back toward downtown Leadville. Turn right at 7th Street (one block past stoplight). Head up 7th Street which will bring you up through the Mining District. Veer right off onto County Road 38 (2.7 mile from Harrison Ave.). This is a **VERY** rough, dusty road, please drive with caution. Another .6 mile to Stumptown Aid Station.

Aid Stations

Number	Name	Mileage
1	Printer Boy	13.5 & 34.5
2	Stumptown	25

LEGEND

- SILVER RUSH RUN ROUTE
- TRAINING BYPASS
- US HIGHWAY
- PAVED ROAD
- GRAVEL ROAD
- 4X4 TRAILS
- STREAM/RIVER
- POND/LAKE



PEOPLES
NATIONAL BANK

